

JAMES ISLAND YACHT CLUB OPEN REGATTA
June 16-17, 2018
James Island Yacht Club
Charleston, SC

SAILING INSTRUCTIONS – MAIN and OUTER COURSES

- 1.0 RULES** - This regatta will be governed by current version of *The Racing Rules of Sailing* (RRS), the prescriptions of the United States Sailing Association and the United States Sunfish Class Association (USSC).
- 2.0 ELIGIBILITY** The regatta is open to yachts of all classes. Classes with four or more boats entered may compete as a class. Sea Island One Design and all Junior classes need only three boats entered.
- 3.0 NOTICES TO COMPETITORS** - Notices to competitors will be posted on the official notice board(s) located at the glass doors of the club's meeting room.
- 4.0 CHANGES IN THE SAILING INSTRUCTIONS:** Any change to the sailing instructions will be posted on Saturday at the conclusion of the skippers meeting, and on Sunday by 1000 hours. Changes to the SIs on the water will be made before the Warning signal. The L flag will be raised and the change will be made using radio and loud hauler to affected classes.
- 5.0 SIGNALS MADE ASHORE**
- 5.1** Signals made ashore will be displayed from the club's flagpole.
- 5.2** When code flag "AP" is displayed ashore, "1 minute" is replaced with "not less than 30 minutes" in the RRS Race Signal "AP."
- 6.0 SCHEDULE OF RACES**
- 6.1** Races are scheduled as follows:
- | | | |
|-------------------|------|-----------------------|
| Saturday, June 17 | 1115 | Skipper Meeting |
| | 1255 | First Warning |
| | | Other races to follow |
| Sunday, June 18 | 1155 | First Warning |
| | | Other races to follow |
- 6.2** No races will be started after 1500 on Sunday, June 17
- 6.3** The number of races to be sailed will be as many as possible.
- 7.0 CLASS FLAGS**
- 7.1** Class flags will be announced at the Skipper's Meeting and posted on the Official Notice Board.
- 8.0 RACING AREA**
- 8.1** Attachment (**A**) shows the location of racing areas.
- 9.0 COURSES**
- 9.1** The diagrams in Attachment (**B**) show the courses, including the approximate angles between legs, the order in which marks are to be passed, and the side on which each mark is to be passed.
- 9.2** No later than the warning signal, the RC signal boat will display the course to be sailed.
- 10.0 AREAS THAT ARE OBSTRUCTIONS**
- The following areas are designated as obstructions: "middle ground".

11.0 MARKS

	Main Course	Outer Course
Marks W, G, L	Yellow Sphere	Orange Cylinder
Starting Mark	White Sphere	White Sphere
Finish Mark	Orange Sphere or pin boat	Orange Sphere or pin boat
Change Mark	Orange Sphere	Yellow Tetrahedral

12.0 THE START

12.1 Races will be started using RRS 26.

12.2 The starting line will be between the staff displaying an orange flag on the RC signal boat on the starboard end of the starting line and the port end starting mark.

12.3 A boat starting later than **5** minutes after her starting signal will be scored Did Not Start without a hearing. This is in addition to rules A4 and A5.

13.0 THE FINISH

13.1 The finishing line for courses 1, 2, 3, and 4 will be between a staff displaying a blue flag on the finishing boat at the starboard end and the port end finishing mark or pin boat displaying an orange flag

14.0 PENALTY SYSTEM

The following parts of Appendix V are in effect: V1 and V2, except for the SIOD Class, Hobie Classes and the Wasp Class where V1 is changed so that only one turn, including one tack and one gybe, is required.

Any boat that does a two-turns or one-turn penalty will report this fact to the race committee as soon as possible after finishing, giving them the sail number of the boat doing the penalty turns. Only the RC may protest a boat if this rule is broken.

15.1 TIME LIMITS

15.1 The time limit for the first boat of each class to pass the first *mark* will be 30 minutes.

15.2 The time limit for the first boat in each class to finish is 1 hours.

15.3 Boats failing to finish within **30 minutes** after the first boat sails the course and finishes will be scored Time Limit Expired, TLE. This is an addition to RRS 35 and A4.1.

16.1 PROTESTS AND REQUESTS FOR REDRESS

16.1 Protest forms are available at the race office. Protests shall be delivered there within the protest time limit, which starts when the Committee Boat reaches the dock and ends 30 minutes later. The same protest time limit applies to all protests by the RC and jury and to requests for redress. This modifies RRS 61.3 and 62.2.

16.2 Notices of scheduled protest or requests for redress hearings will be posted within 30 minutes of the protest time limit to inform competitors of hearings in which they are parties or may be parties affected by a request for redress. This will constitute notice to all parties under RRS 63.2 and its Prescription.

16.3 Hearings will be held in the jury room, located at the meeting room

17.0 SCORING

17.1 Low point scoring system will be used as describe in Appendix A except that one score will be excluded after five races have been sailed. This is in addition to RRS A2

17.2 One (1) race is required to be completed to constitute a series.

17.3 Boats scored TLE will receive 2 points more than the number of boats that finished.

18.0 SAFETY

18.1 US Coast Guard approved floatation device must be carried for each person, on each boat from the time the boat leaves the shore until the time the boat returns to the shore.

18.2 A boat that retires from a race shall notify the race committee as soon as possible.

18.3 A boat and its crew shall at all times *keep clear* of all commercial vessels and shall not maneuver in any manner which would cause a commercial vessel to be unable to sail their proper course or carry out their commercial functions in a normal manner.

18.4 A boat whose actions or maneuvers result in a Danger Signal (5 Horns or Sounds) from a commercial vessel may be protested.

18.5 Only the RC or PC may protest a boat under this Sailing Instruction. This is in addition to RRS 60.1.

19.1 SUPPORT BOATS

Team leaders, coaches and other support personnel shall stay outside areas where boats are racing from the time of the preparatory signal for the first class to start until all boats have finished or the race committee signals a postponement, general recall or abandonment.

20.1 RADIO COMMUNICATION

A boat shall neither make radio transmissions while racing, except for emergencies, nor receive radio communications not available to all boats. This restriction also applies to mobile telephones.

21.1 PRIZES

Prizes will be given as follows:

The number of trophies will be determined by the number of boats entered in each class as follows:

1 st	4 to 6 registered (except SIOD)
1 st , 2 nd	7 to 9 registered
1 st , 2 nd , 3 rd	10 to 14 registered
1 st , 2 nd , 3 rd , 4 th	15 to 19 registered
1 st , 2 nd , 3 rd , 4 th , 5 th	20 or more registered

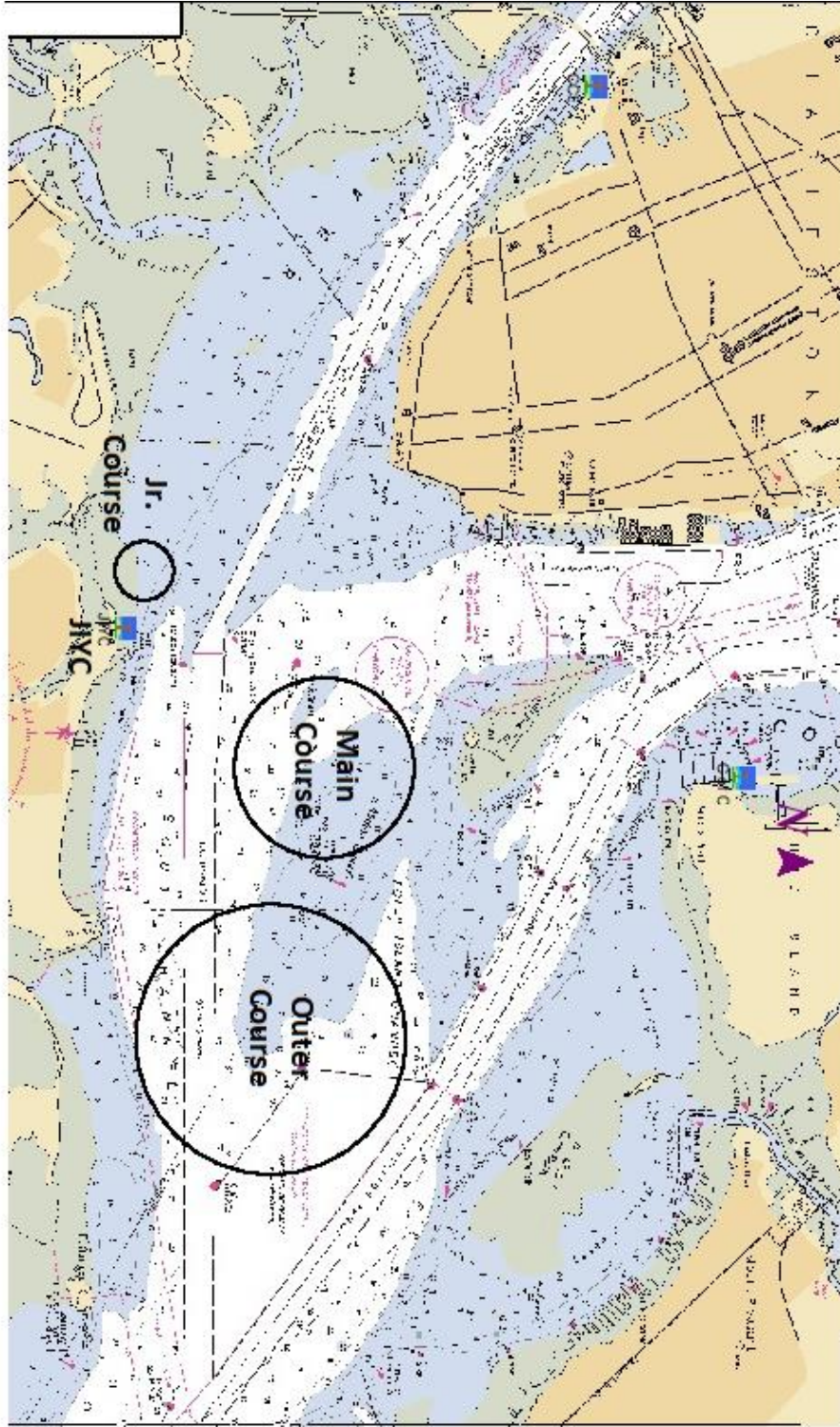
- The A.C. Hollings Perpetual Trophy will be engraved with the name of the first place winner of the class with the largest number of registered yacht. The winner will receive an appropriate trophy for his / her retention.
- The Clyde Easterling Perpetual Trophy will be engraved with the name of the SIOD first place winner. The winner will receive an appropriate trophy for his / her retention.
- JIYC will award a special trophy to the youngest JIYC sailing skipper completing all races scheduled in his / her class.
- JIYC IOBG will award a special trophy to the oldest JIYC sailing skipper completing all races scheduled in his / her class.
- USSCA South East Regional Championship prizes will be awarded based on those registered to participate. The top finisher not already qualified will be invited to the ISCA World Championship in 2019.

22.1 DISCLAIMER OF LIABILITY

Competitors participate in the regatta entirely at their own risk. See rule 4, Decision to Race. The organizing authority will not accept any liability for material damage or personal injury or death sustained in conjunction with or prior to, during, or after the regatta.

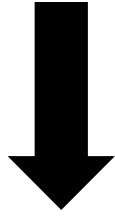
Attachment A

CAPE HATTERAS TO CHARLESTON - 1 : 101,482
(NOAA Chart) Chart #11520_1 - Depth Units: FATHOMS



DO NOT USE FOR NAVIGATION

Naval Service - Copyright © 1985-2002 National Geographic, 888446-2877



WIND



W MARK

1. S-W-F
2. S-W-L-W-F
3. S-W-L-W-L-W-F
4. S-W-G-L-W-F
5. S-W-L-W-L-W-L-W-F

ALL MARKS TO PORT

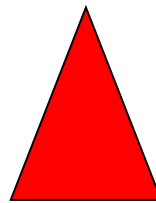


G MARK

L MARK



START PIN



RC



FINISH

Attachment (B)