

JAMES ISLAND YACHT CLUB OPEN REGATTA
June 16 - 17, 2018
James Island Yacht Club
Charleston, SC
SAILING INSTRUCTIONS – JUNIOR COURSE

1.0 RULES - The regatta will be governed by *The Racing Rules of Sailing* (RRS).

2.0 NOTICES TO COMPETITORS - Notices to competitors will be posted on the official notice board(s) located at the glass doors of the club's meeting room.

3.0 CHANGES IN THE SAILING INSTRUCTIONS: Any change to the sailing instructions will be posted on Saturday at the conclusion of the skippers meeting, and on Sunday by 1000 hours. Oral changes to the Sailing Instructions may be given on the water by hail from the Signal Boat under code flag "L" in accordance with RRS 90.2 (c). Changes must be made before the warning signal.

4.0 SIGNALS MADE ASHORE

4.1 Signals made ashore will be displayed from the club's flagpole.

4.2 When code flag "AP" is displayed ashore, "1 minute" is replaced with "not less than 30 minutes" in the RRS Race Signal "AP."

5.0 SCHEDULE OF RACES

5.1 Races are scheduled as follows:

Saturday, June 16	1115	Skipper Meeting
	1230	First Warning
		Other races to follow

Sunday, June 17	1155	First Warning
		Other races to follow

5.2 No races will be started after 1430 on Sunday, June 17.

5.3 The number of races to be sailed will be as many as possible.

6.0 CLASS FLAGS

6.1 Class flags will be announced at the Skipper's Meeting and posted on the Official Notice Board.

7.0 RACING AREA

7.1 Attachment (**A**) shows the location of racing areas. The Junior racing area will be area west of the James Island Yacht Club dock. The Green fleet course will be closer to the dock, while the Junior course will be further west.

8.0 COURSES

8.1 The diagrams in Attachment (**B**) show the courses, including the approximate angles between legs, the order in which marks are to be passed, and the side on which each mark is to be left. The courses are specified by letter designations.

8.2 A number following the letter on the course board for courses W and T will indicate the number of times that a course is to be sailed.

9.0 MARKS

Junior Course

Marks 1,2 & 3	Yellow Tetrahedron
Starting Mark	White Sphere
Finish Mark	White Sphere
Change Mark	Orange Sphere

Green Fleet Course

Marks for the green fleet will be Green Spheres

10.0 THE START

- 10.1 Races will be started using Appendix S – Sound-Signal starting system.
- 10.2 Junior Fleet and Green Fleet: The starting line will be between the staff displaying an orange flag on the RC signal boat on the starboard end of the starting line and the port end starting mark.
- 10.3 Boats whose warning signal has not been made shall keep clear of the starting area and of all boats that are racing. Only the RC may protest a boat if this rule is broken.
- 10.4 A boat starting later than **5** minutes after her starting signal will be scored Did Not Start without a hearing. This is in addition to rules A4 and A5.

11.0 THE FINISH

- 11.1 Junior Fleet: The finishing line will be between a staff displaying an orange flag on the RC signal boat at the starboard end and the port end finishing mark.
- 11.2 Green Fleet: The finishing line will be between a staff displaying an orange flag on the RC signal boat at the port end and the starboard end finishing mark.

12.0 PENALTY SYSTEM

The following sections of Appendix V will be in effect: V1 and V2. A boat taking a penalty under V1 or retiring shall notify the Race Committee that they have taken a penalty.

12.0 TIME LIMITS

- 12.1 The time limit for the first boat of each class to pass the first *mark* will be 45 minutes.
- 12.2 The time limit for the first boat in each class to finish is 1.5 hours.
- 12.3 Boats failing to finish within **30 minutes** after the first boat sails the course and finishes will be scored Time Limit Expired, TLE. This is in addition to RRS 35 and A4.1.

13.0 PROTESTS AND REQUESTS FOR REDRESS

- 13.1 Protest forms are available at the race office. Protests shall be delivered there within the protest time limit, which starts when the Committee Boat reaches the dock and ends 30 minutes later. The same protest time limit applies to all protests by the RC and jury and to requests for redress. This changes RRS 61.3 and 62.2.
- 13.2 Notices of scheduled protest or requests for redress hearings will be posted within 30 minutes of the protest time limit to inform competitors of hearings in which they are parties or may be parties affected by a request for redress. This will constitute notice to all parties under RRS 63.2 and its Prescription.
- 13.3 13.3 A list of boats that have been scored TLE, under instruction 13. 3, or are being protested by the race/protest committee will be posted before the protest time limit. This action by the race/protest committee will serve the requirements of RRS 61.1(c).
- 13.4 Hearings will be held in the jury room, located at the meeting room.

14.0 SCORING

- 14.1 Low point scoring system will be used as describe in Appendix A except that one score will be excluded after six races have been sailed. This is in addition to RRS A2
- 14.2 One (1) race is required to be completed to constitute a series.
- 14.3 Boats scored TLE will receive 2 points more than the number of boats that finished.

15.0 SAFETY

- 15.1 US Coast Guard approved floatation device must be worn by each person, on each boat from the time the boat leaves the shore until the time the boat returns to the shore.
- 15.2 A boat that retires from a race shall notify the race committee as soon as possible.
- 15.3 Only the RC or PC may protest a boat for breaking SI Rule 16. This is an addition to RRS 60.1.

18.0 SUPPORT BOATS

Team leaders, coaches and other support personnel shall stay outside areas where boats are racing from the time of the preparatory signal for the first class to start until all boats have finished or the race committee signals a postponement, general recall or abandonment. This rule is waived for the Green fleet Optimist class

19.0 PRIZES

Prizes will be given as follows:

The number of trophies will be determined by the number of boats entered in each class as follows:

1 st	3 registered
1 st , 2 nd	4 to 6 registered
1 st , 2 nd , 3 rd	7 to 9 registered
1 st , 2 nd , 3 rd , 4 th	10 to 13 registered
1 st , 2 nd , 3 rd , 4 th , 5 th	14 or more registered

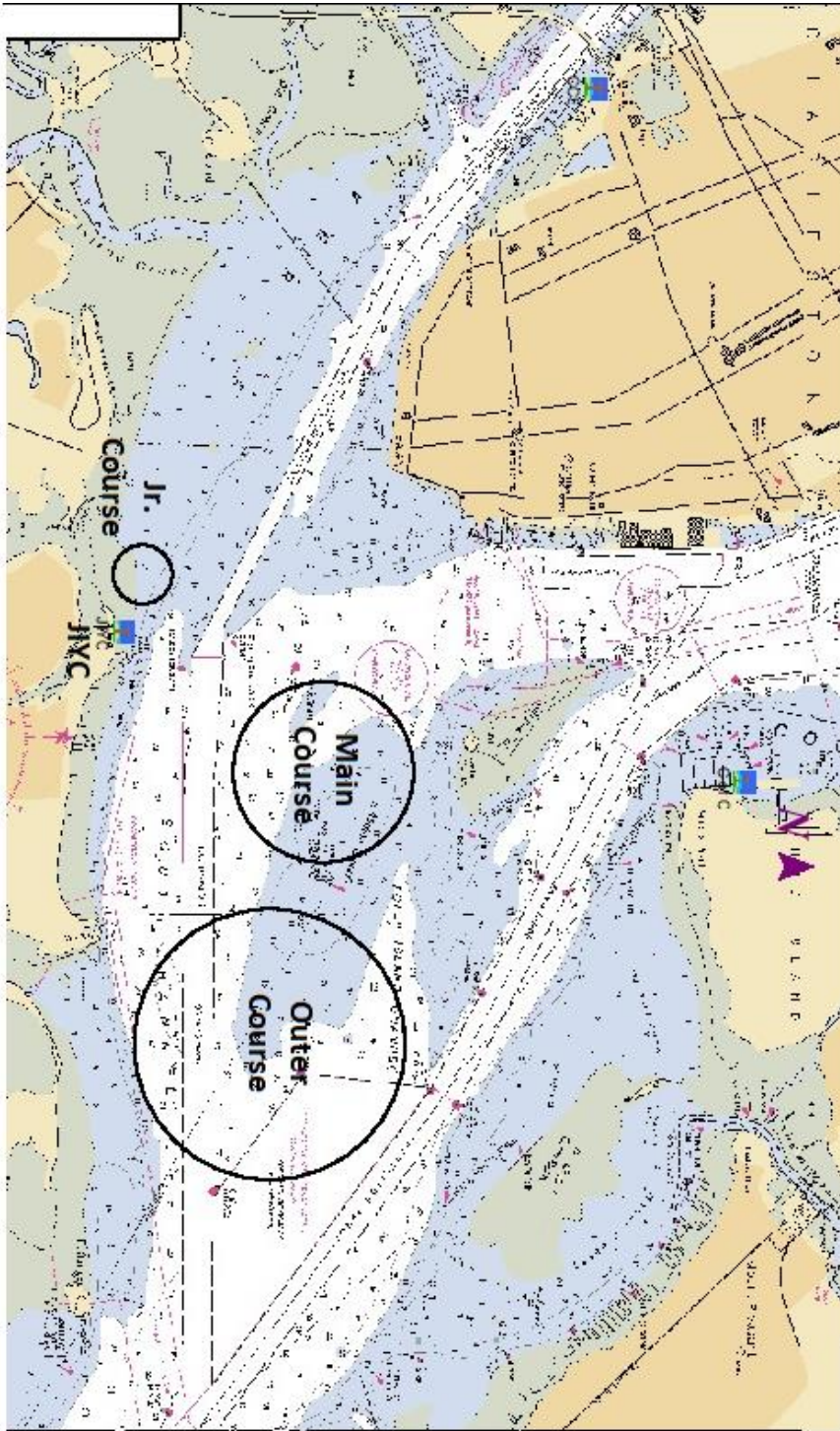
- The A.C. Hollings Perpetual Trophy will be engraved with the name of the first place winner of the class with the largest number of registered yacht. The winner will receive an appropriate trophy for his / her retention.
- JIYC will award a special trophy to the youngest JIYC sailing skipper completing all races scheduled in his / her class.

20.0 DISCLAIMER OF LIABILITY

Competitors participate in the regatta entirely at their own risk. See rule 4, Decision to Race. The organizing authority will not accept any liability for material damage or personal injury or death sustained in conjunction with or prior to, during, or after the regatta.

Attachment A

CAPE HATTERAS TO CHARLESTON - 1 : 101,482
(NOA Chart) Chart #11520_1 - Depth Units: FATHOMS

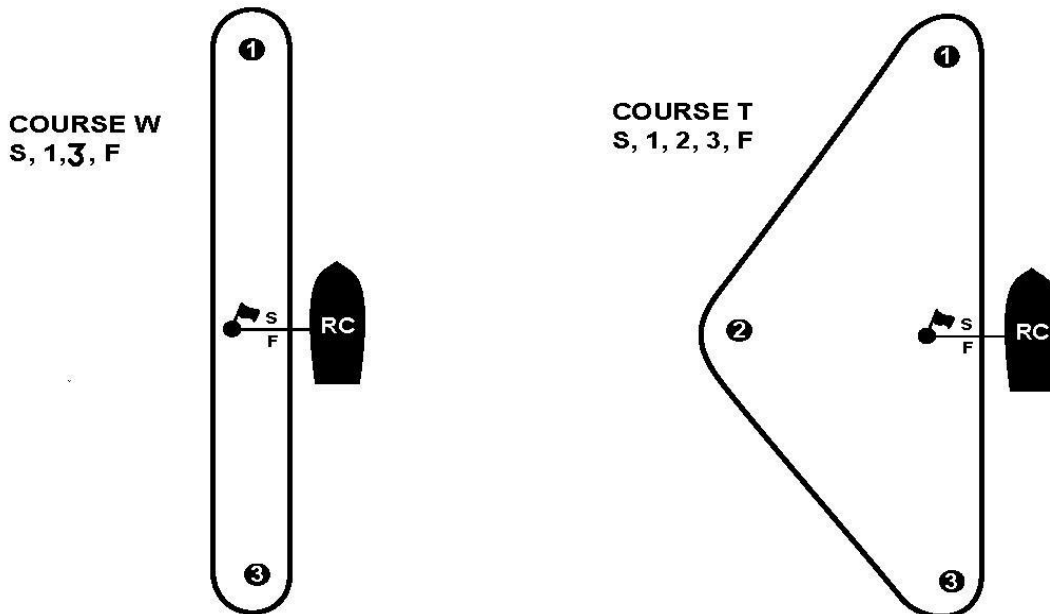


DO NOT USE FOR NAVIGATION

Naval Data™ - Copyright © 1985-2002 National Geographic, 2004-2007

JUNIOR COURSE

ILLUSTRATION B (page 1)



PLEASE NOTE: These course drawings are schematic. Angles and relative distances will vary.

