



JAMES ISLAND YACHT CLUB OPEN REGATTA
June 19 - 20, 2021

James Island Yacht Club
Charleston, SC

SAILING INSTRUCTIONS

(Updated June 9, 2021)

1.0 RULES

1.1 The regatta will be governed by the rules as defined in *The Racing Rules of Sailing* (RRS).

2.0 CHANGES IN THE SAILING INSTRUCTION

- 2.1** Any change to the sailing instructions will be posted on Friday at the conclusion of the skipper's Zoom meeting (<https://us02web.zoom.us/j/81086760180?pwd=ZEh3ZfV5a1A5RmsyeEZrdDFFM053UT09>), by 1100 on Saturday and on Sunday by 1000 hours.
- 2.2** Oral changes to the Sailing Instructions may be given on the water by hail from the Signal Boat under code flag "L" in accordance with RRS 90.2 (c). Changes must be made before the warning signal.

3.0 COMMUNICATION WITH COMPETITORS

- 3.1** Notices to competitors will be posted on the official notice board located at the club's Sailing Shed, listed on YachtScoring (<https://yachtscoring.com/emenu.cfm?eid=14594>) and will be sent to the competitor's registration email and phone text.
- 3.2** A boat shall neither make radio transmissions while racing, except for emergencies, nor receive radio communications not available to all boats. This restriction also applies to mobile telephones.

4.0 CODE OF CONDUCT

- 4.1** [DP] Competitors and support persons shall comply with reasonable requests from race officials.
- 4.2** [DP] Competitors and support persons shall [handle any equipment][or][place advertising provided] by the organizing authority with care, seamanship, in accordance with any instructions for its use and without interfering with its functionality.

5.0 SIGNALS MADE ASHORE

- 5.1** Signals made ashore will be displayed from the club's flagpole.
- 5.2** When code flag "AP" is displayed ashore, "1 minute" is replaced with "not less than 30 minutes" in the RRS Race Signal "AP."

6.0 SCHEDULE OF RACES

6.1 Races are scheduled as follows:

Saturday, June 19	1130 1230 1255	Online registration closes. First Warning, Junior Course First Warning, Main and Outer Courses Other races to follow.
Sunday, June 20	1130 1155	First Warning, Junior Course First Warning, Main and Outer Courses

Awards Ceremony – Outside, under the Club Pavilion,

6.2 No races will be started after 1500 on Sunday, June 20.

6.3 The number of races to be sailed will be as many as possible.

7.0 CLASS FLAGS

Junior Course

Opti Green	Opti Green Class Flag
Opti (Red, Blue White)	Opti Class Flag
Open Skiff (<14 & 13+)	Open Skiff Class Flag
Junior 420	420 Class Flag

Main Course

Laser	Laser Class Flag
Sunfish	Sunfish Class Flag (White w/ Red Fish)
Club and Collegiate 420	420 Class Flag or Yellow
Y Flyer	Y Flyer Class Flag or Purple

Outer Course

Lightning	Lightning White Class Flag
SIOD	Cygnets II Burgee
VX One	Purple
Waspz	Yellow
J24	J24 Class Flag
Hobie 16	
Hobie 20	

Additional classes registering will be announced at the skipper meeting and post at the Official Notice Board and uploaded to the YachtScoring Notice Board (<https://yachtscoring.com/emenu.cfm?eid=14594>).

8.0 RACING AREA

8.1 Attachment (A) shows the location of racing areas.

8.2 The Junior racing area will be area west of the James Island Yacht Club dock.

8.3 The Green fleet course will be closer to the dock, while the Junior course will be further west.

9.0 COURSES

9.1 The diagrams in Attachment (B) show the courses, including the approximate angles between legs, the order in which marks are to be passed, and the side on which each mark is to be passed.

9.2 No later than the warning signal, the RC signal boat will display the course to be sailed.

10.0 MARKS

	Main Course	Outer Course	Junior Course	Green Fleet
Marks W, G, L	Yellow Sphere	Orange Cylinder		
Marks 1, 2, 3			Yellow Tetrahedron	Green Sphere
Starting Mark	White Sphere	White Sphere	White Sphere	White Sphere
Finish Mark	Orange Sphere or pin boat	Orange Sphere or pin boat	White Sphere	White Sphere
Change Mark	Orange Sphere	Yellow Tetrahedral	Orange Sphere	

11.0 OBSTRUCTIONS

11.1 The following areas are designated as obstructions: "middle ground".

12.0 THE START

12.1 Races will be started using RRS 26.

12.2 The starting line will be between the staff displaying an orange flag on the RC signal boat on the starboard end of the starting line and the port end starting mark.

12.3 A boat starting later than 4 minutes after her starting signal will be scored Did Not Start without a hearing. This changes RRS A5.1 and A5.2.

13.0 CHANGE OF THE NEXT LEG OF THE COURSE

13.1 To change the next leg of the course, the race committee will lay a new mark (or move the finishing line) and remove the original mark as soon as practicable. When in a subsequent change a new mark is replaced, it will be replaced by an original mark.

14.0 THE FINISH

14.1 The finishing line for courses will be between a staff displaying a blue flag on the finishing boat at the port end and the starboard end finishing mark or pin boat displaying a blue flag.

15.0 PENALTY SYSTEM

15.1 PENALTIES TAKEN AFTER A RACE (RRS V2) - After a race, a boat that may have broken a rule of part two or RRS 31 while *racing* may take a Post-Race penalty for that incident. A boat takes the penalty by delivering a written notice to the Race Office that identifies the race number and when and where the incident occurred. The penalty shall be a 30% Scoring Penalty, calculated as stated in rule 44.3(c). However, rules 44.1(a) and (b) apply, and the penalty shall not be taken after a protest hearing involving the incident has started.

15.2 Any boat that does a two-turns or one-turn penalty will report this fact to the race committee as soon as possible after finishing, giving them the sail number of the boat doing the penalty turns. Only the RC may protest a boat if this rule is broken.

16.0 TIME LIMITS

16.1 Time limits and target times are as follows:

Class	Race Target Time	Race Time Limit	Mark 1 Target Time	Mark 1 Target limit	Finishing Window
All	45 minutes	60 minutes	13-18 minutes	30 minutes	30 minutes

16.2 If no boat has passed the first mark within the Mark 1 Time Limit, the race will be abandoned.

16.3 The Finishing Window is the time for boats to finish after the first boat sails the course and finishes. Boats failing to finish within the Finishing Window, and not subsequently retiring, penalized or given redress, will be scored Time Limit Expired (TLE) without a hearing. A boat scored TLE shall be scored points for the finishing place two more than the points scored by the last boat that finished within the Finishing Window. This changes RRS 35, A5.1, A5.2 and A10.

17.0 HEARING REQUESTS

17.1 Protest forms are available from the race office at the Club Meeting Room. Protests and request for redress or reopening shall be delivered there within the protest time limit.

17.2 For each course, the protest time limit is 30 minutes after the Committee Boat reaches the dock. The same protest time limit applies to all protests by the Race Committee and Protest Committee and to requests for redress.

17.3 Notices of scheduled protest or requests for redress hearings will be posted within 30 minutes of the protest time limit to inform competitors of hearings in which they are parties or may be parties affected by a request for redress.

17.4 Hearings will be held in the jury room, located at the meeting room.

17.5 Notices of protests by the Race Committee or Protest Committee will be posted on the official notice board to inform boats under rule 61.1(b) and 61.1(c).

18.0 SCORING

18.1 Low point scoring system will be used as describe in Appendix A except that one score will be excluded after five races have been sailed. This is in addition to RRS A2

18.2 One (1) race is required to be completed to constitute a series.

19.0 SAFETY REGULATIONS

19.1 US Coast Guard approved floatation device must be carried for each person, on each boat from the time the boat leaves the shore until the time the boat returns to the shore.

19.2 A boat that retires from a race shall notify the race committee at the first reasonable opportunity.

19.3 A boat and its crew shall at all times *keep clear* of all commercial vessels and shall not maneuver in any manner which would cause a commercial vessel to be unable to sail their proper course or carry out their commercial functions in a normal manner.

19.4 [DP] A boat whose actions or maneuvers result in a Danger Signal (5 Horns or Sounds) from a commercial vessel may be protested.

19.5 Only the RC or PC may protest a boat under this Sailing Instruction. This is in addition to RRS 60.1.

20.0 [DP] SUPPORT TEAMS

20.1 Team leaders, coaches and other support personnel shall stay outside areas where boats are racing from the time of the preparatory signal for the first class to start until all boats have finished or the race committee signals a postponement, general recall or abandonment.

21.0 RADIO COMMUNICATION

21.1 A boat shall neither make radio transmissions while racing, except for emergencies, nor receive radio communications not available to all boats. This restriction also applies to mobile telephones.

22.0 PRIZES

22.1 Prizes will be given as follows:

The number of trophies will be determined by the number of boats entered in each class as follows:

1st

4 to 6 registered (except SIOD)

1 st , 2 nd	7 to 9 registered
1 st , 2 nd , 3 rd	10 to 14 registered
1 st , 2 nd , 3 rd , 4 th	15 to 19 registered
1 st , 2 nd , 3 rd , 4 th , 5 th	20 or more registered

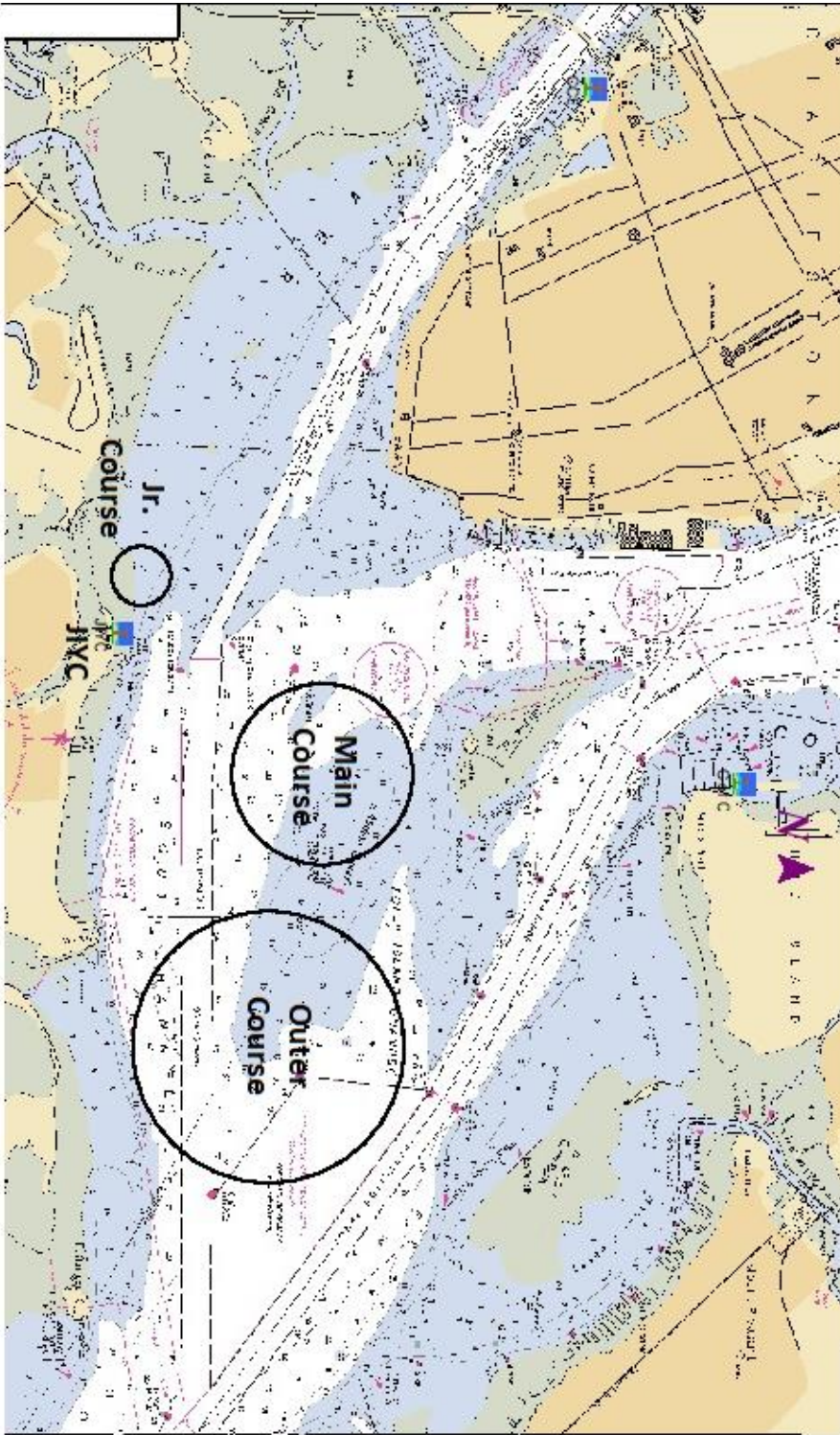
- The A.C. Hollings Perpetual Trophy will be engraved with the name of the first place winner of the class with the largest number of registered yachts. The winner will receive an appropriate trophy for his / her retention.
- The Clyde Easterling Perpetual Trophy will be engraved with the name of the SIOD first place winner. The winner will receive an appropriate trophy for his / her retention.
- JIYC will award a special trophy to the youngest JIYC sailing skipper completing all races scheduled in his / her class.
- JIYC IOBG will award a special trophy to the oldest JIYC sailing skipper completing all races scheduled in his / her class.

23.0 RISK STATEMENT

23.1 RRS 3 states: 'The responsibility for a boat's decision to participate in a race or to continue to race is hers alone.' By participating in this event each competitor agrees and acknowledges that sailing is a potentially dangerous activity with inherent risks. These risks include strong winds and rough seas, sudden changes in weather, failure of equipment, boat handling errors, poor seamanship by other boats, loss of balance on an unstable platform and fatigue resulting in increased risk of injury. Inherent in the sport of sailing is the risk of permanent, catastrophic injury or death by drowning, trauma, hypothermia or other causes.

Attachment A

CAPE HATTERAS TO CHARLESTON - 1 : 101,482
(NOAA Chart) Chart #11520 J - Depth Units: FATHOMS



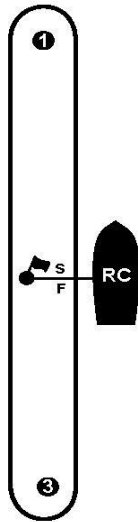
DO NOT USE FOR NAVIGATION

Naval Service - Copyright © 1985-2002 Nautical Corporation (NSC-2077)

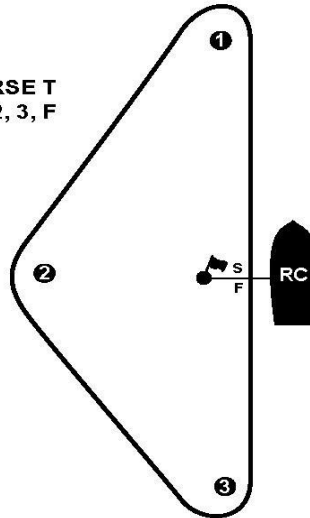
JUNIOR COURSE

ILLUSTRATION B (page 1)

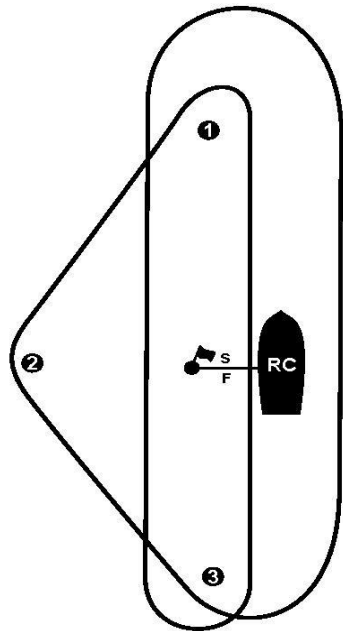
COURSE W
S, 1, 3, F



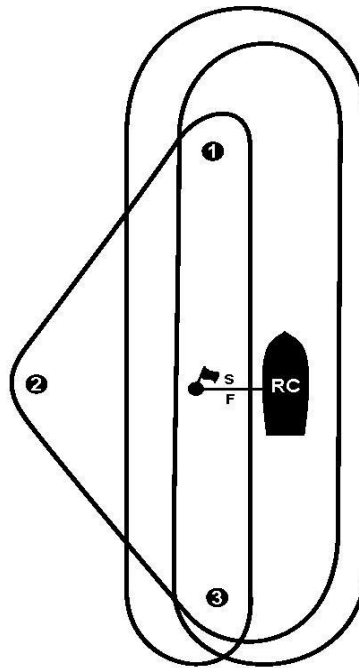
COURSE T
S, 1, 2, 3, F



PLEASE NOTE: These course drawings are schematic. Angles and relative distances will vary.



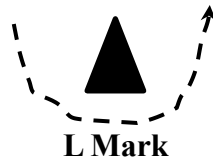
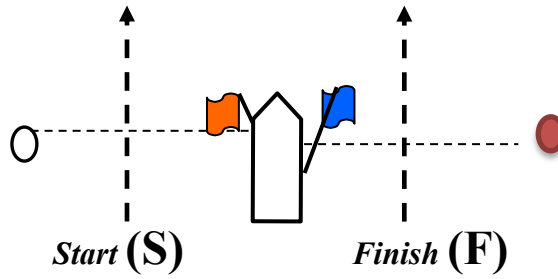
COURSE O
S, 1, 2, 3, 1, 3, F



COURSE L
S, 1, 2, 3, 1, 3, 1, 3, F

ATTACHMENT B

Main and Outer Course Diagram



COURSE NO.	Marks
1	S-W-L-F
2	S-W-L-W-L-F
3	S-W-L-W-L-W-L-F
4	S-W-L-W-L-W-L-W-L-F
5	S-W-G-L-F
6	S-W-G-L-W-L-F